



THE SUPREME LOFT COLLECTION

WELCOME TO THE UNVEILING OF THE LOFT COLLECTION IN LONDON'S TALLEST RESIDENTIAL TOWER. A NEW COLLECTION OF APARTMENTS THAT OFFER THE FLEXIBILITY OF A STUDIO AND THE FUNCTIONALITY OF A ONE-BEDROOM.

THIS NEW COLLECTION OF FABULOUSLY DESIGNED HOMES PRESENTS A RARE OPPORTUNITY TO OWN A PROPERTY IN ONE OF LONDON'S MOST OUTSTANDING LOCATIONS, OFFERING UNRIVALLED VIEWS OVER THE CITY, CANARY WHARF AND BEYOND. RESIDENTS WILL ENJOY ACCESS TO A RANGE OF WORLD-CLASS AMENITIES SET IN EXQUISITELY CURATED SPACES, INCLUDING A SPECTACULAR ENTRANCE LOBBY WITH 24-HOUR CONCIERGE, A STATE-OF-THE-ART GYM, PRIVATE CINEMA, RESIDENTS' LOUNGE AND ROOF TERRACE.



SOPHISTICATED CITY LIVING

The Loft Collection offers the very best in sophisticated city living, from the elegant interiors and stunning, uninterrupted views that are hard to find anywhere else in the city, to the location in London's dazzling financial district. A retail and dining destination in its own right, Landmark Pinnacle also benefits from superb connections to central London, the rest of the city and beyond.



TYPE B

Computer generated images are indicative only. All content is subject to the full disclaimer on the last page of this brochure.



BESPOKE DESIGN

Suite apartments in the Loft Collection are designed in a neutral palette with timber floors to create a simple but stylish feel that doesn't detract from the magnificent views. For Floorplan Type A residences, purchasers can tailor their studio according to their privacy needs with a choice of either a solid or slatted wall partition between the sleeping and living areas.



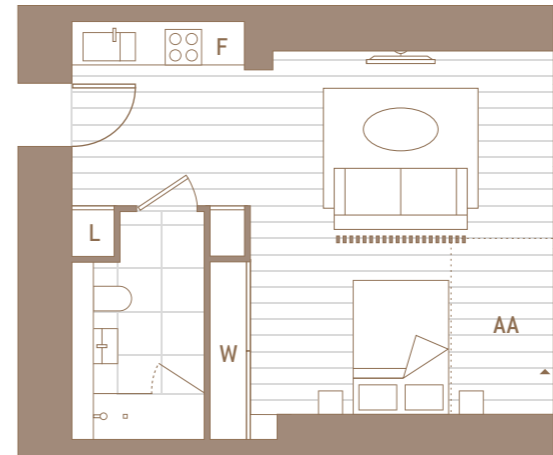
TYPE A

Computer generated images are indicative only. All content is subject to the full disclaimer on the last page of this brochure.



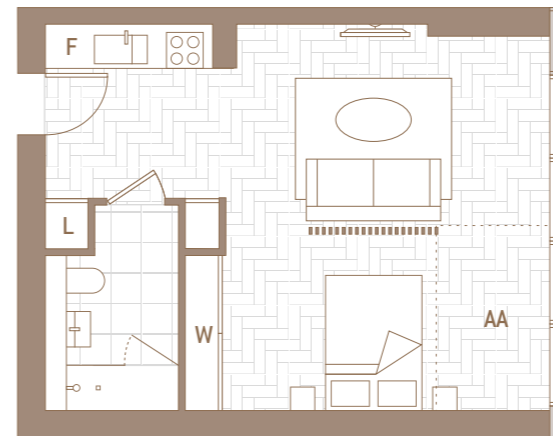
APARTMENT LAYOUT

The Loft Collection comes in six different types, A to C for Residences and Pinnacle Residences, which range from approximately 39 sq m to 51 sq m in size. They benefit from Amenity Areas with sliding windows that can be opened to the elements.



RESIDENCES, TYPE A LEVELS 11-55

Total Area 39.6 - 40.7 sq m
426 - 438 sq ft



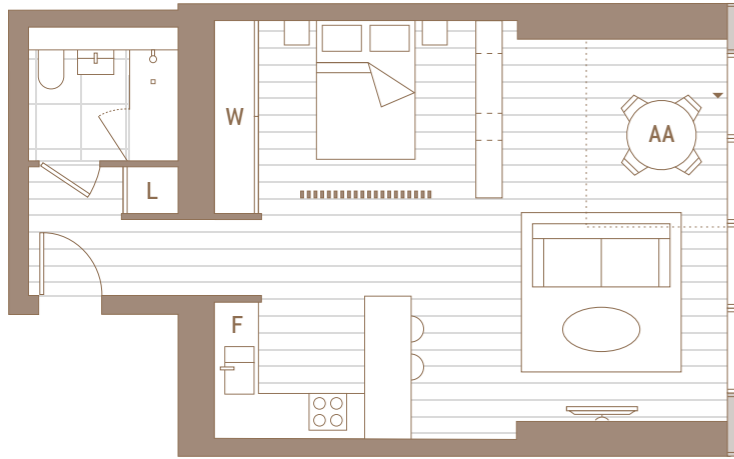
PINNACLE, TYPE A LEVELS 57-64

Total Area 41.6 sq m
448 sq ft



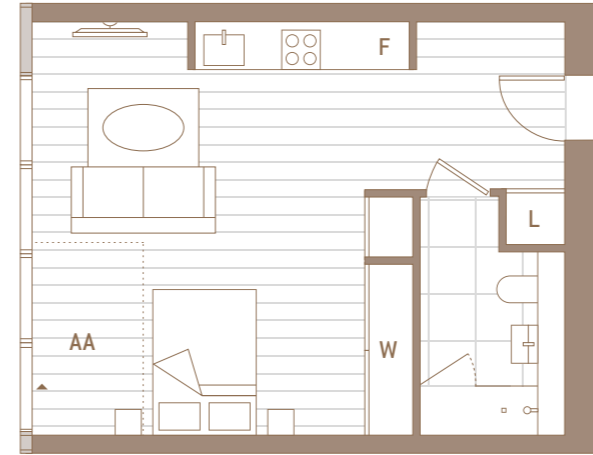
AA Amenity Area
F Fridge
L Laundry
W Wardrobe





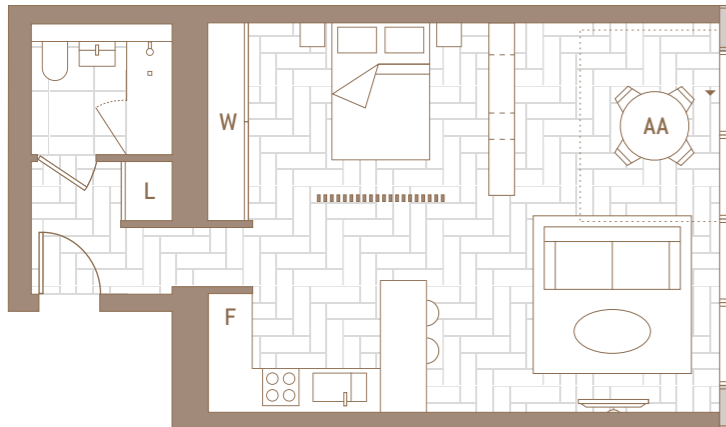
RESIDENCES, TYPE B LEVELS 28–55

Total Area 50.1 - 53.2 sq m
539 - 573 sq ft



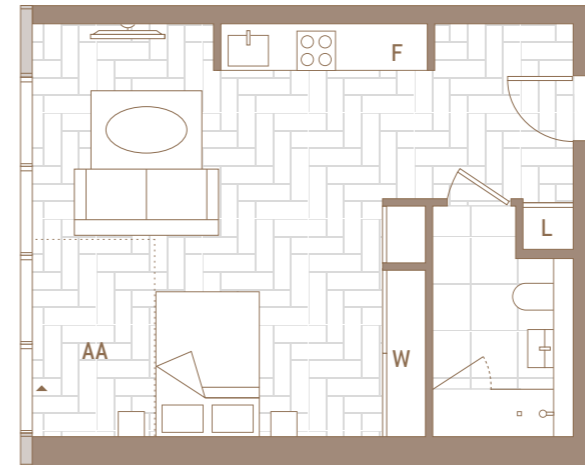
RESIDENCES, TYPE C LEVELS 18–49

Total Area 38.5 - 39.7 sq m
414 - 427 sq ft



PINNACLE, TYPE B LEVELS 57–64

Total Area 51.0 sq m
549 sq ft



PINNACLE, TYPE C LEVELS 61–64

Total Area 40.4 - 41.7 sq m
435 - 449 sq ft



AA Amenity Area
F Fridge
L Laundry
W Wardrobe

SUPERIOR SPECIFICATION

INTERIOR FINISHES

- Engineered timber floor finish to living, dining, kitchen, hallways and reception rooms
- Front entrance doors with veneered finish and matching hardwood frame
- White satin finish internal doors
- Skirting and architraves in white satin finish
- Smooth-painted ceilings
- Winter garden with full-height glazed door (where winter garden applicable)
- Brushed-chrome ironmongery
- Carpets to bedrooms
- Wardrobes to master and bedroom 2 with timber veneer doors and frames. Wardrobe lengths range between 1.2 to 1.8 linear metres
- Engineered-timber herringbone flooring to living, dining, kitchen, hallways and reception rooms (Pinnacle Residences only)

KITCHEN

- Custom-designed fully integrated open-plan kitchen in lacquered finish
- Reconstituted stone worktops and splashbacks
- One and a half bowl under-mounted stainless steel sink and single-lever mixer tap (studio apartments have a single bowl sink)
- Siemens or similar multi-function combination oven and microwave
- Siemens or similar induction hob with extractor fan above hob
- Siemens or similar integrated fridge freezer to 1-, 2- and 3-bed apartments
- Siemens or similar integrated fridge with ice box to studios
- Siemens or similar integrated dishwasher
- Brass tapware to kitchens (Pinnacle Residences only)
- Custom-designed fully integrated kitchen in veneered finish (Pinnacle Residences only)

UTILITY CUPBOARD

- Cooling and heating interface units
- Mechanical ventilation heat recovery (MVHR) unit
- Siemens or similar washing machine/dryer
- Consumer unit storage

BATHROOMS/SHOWER ROOMS

- Ceiling-mounted shower with additional wall-mounted hand-held shower in all showers and baths
- Glass shower enclosure/screen
- Bespoke vanity unit with reconstituted stone countertop
- Mirrored toiletries cabinet with integral lighting
- Wall-mounted WC with concealed cistern, soft-close seat and dual push-button flush
- White steel-enamel bath
- Featured heated chrome towel bars/rail
- Porcelain tiled floors and walls
- Feature stone wall to bath/shower rooms (Pinnacle Residences only)
- Veneer bath panel to baths (Pinnacle Residences only)
- Brass tapware to bathrooms (Pinnacle Residences only)

HEATING AND COOLING

- The building is served by the wider development's district heating and chilled water network, providing metered supplies for heating, hot water and cooling to all apartments
- Comfort cooling provided by fancoil units to all reception rooms and bedrooms
- Under-floor heating to bathrooms/shower rooms

LIGHTING AND ELECTRICAL FITTINGS

- Low-voltage LED luminaires throughout
- Electronic dimmer control to living room and master bedroom
- Integrated under-unit lighting
- Brushed stainless steel light switches or similar throughout
- Brushed stainless steel sockets at worktop height in the kitchen
- White plastic socket outlets to all other locations
- Shaver socket to bathrooms/shower rooms

TELECOMMUNICATIONS

- Pre-wired for internet, telephone and multi-media distribution
- Satellite, terrestrial TV

SECURITY AND PEACE OF MIND

- 24-hour on-site security team
- Site-wide CCTV surveillance to public areas and building entrances
- Video-entry phone system to all apartments
- Mains powered and smoke heat detectors and sprinkler fire protection system
- Premier Guarantee 10-year warranty from date of legal completion

COMMUNAL AREAS

- Interior-designed entrance lobbies and corridors
- Terrazzo flooring to main reception area
- Carpeting to all corridors
- Landscaped external areas

PARKING

- Electronic entry system to underground car park
- Car-parking spaces (subject to availability)
- Electric-car charging points
- Secure bicycle storage

AMENITIES

- Children's Play Garden
- London Square Garden
- Private Dining and Meeting Rooms
- Residents' Lounge and Library
- Residents' Gym and Studio
- Private Cinema
- Media Room
- Games Room
- Roof Terraces
- Golf Simulator
- Secure Underground Parking
- 24-hour Concierge
- Pinnacle Park
- Pinnacle Pavilion (Retail)



LONDON SQUARE GARDEN
(top image)

RESIDENTS' GYM AND STUDIO
(right image)



CONTACT

Marketing Suite:
40 Landmark Square
London E14 9AB
T. +44 (0)203 905 6826
sales@landmarkpinnacle.com
landmarkpinnacle.com



This brochure and the information contained in it does not form part of any contract, and while reasonable effort has been made to ensure accuracy, this cannot be guaranteed and no representation or warranty is made in that regard. Apartment designs and layouts are indicative only and may change. Areas defined as Amenity Areas (AA) are subject to planning otherwise they will revert to Winter Gardens (WG). The specification of the apartments is the anticipated specification as at the date this brochure was prepared, but may be subject to change in accordance with permitted variances under the apartment sale contracts. Computer Generated Images and photos are indicative only. All sales remain subject to contract. Fixtures and furnishings including furniture, wall panelling and wall dressings shown in Computer Generated Images and photos are not standard nor included in sales. Please consult your sales contract for information. The property areas are calculated and presented in accordance with the RICS Code of Measuring Practice, 6th edition recommendation. These areas are indicative only of typical floor plans. Property areas of individual apartments/floors may change subject to structural column locations.

Designed & produced by Sectorlight (1909344) +44 (0)20 7264 7700 sectorlight.com February 2019

Computer generated images are indicative only. All content is subject to the above disclaimer.

